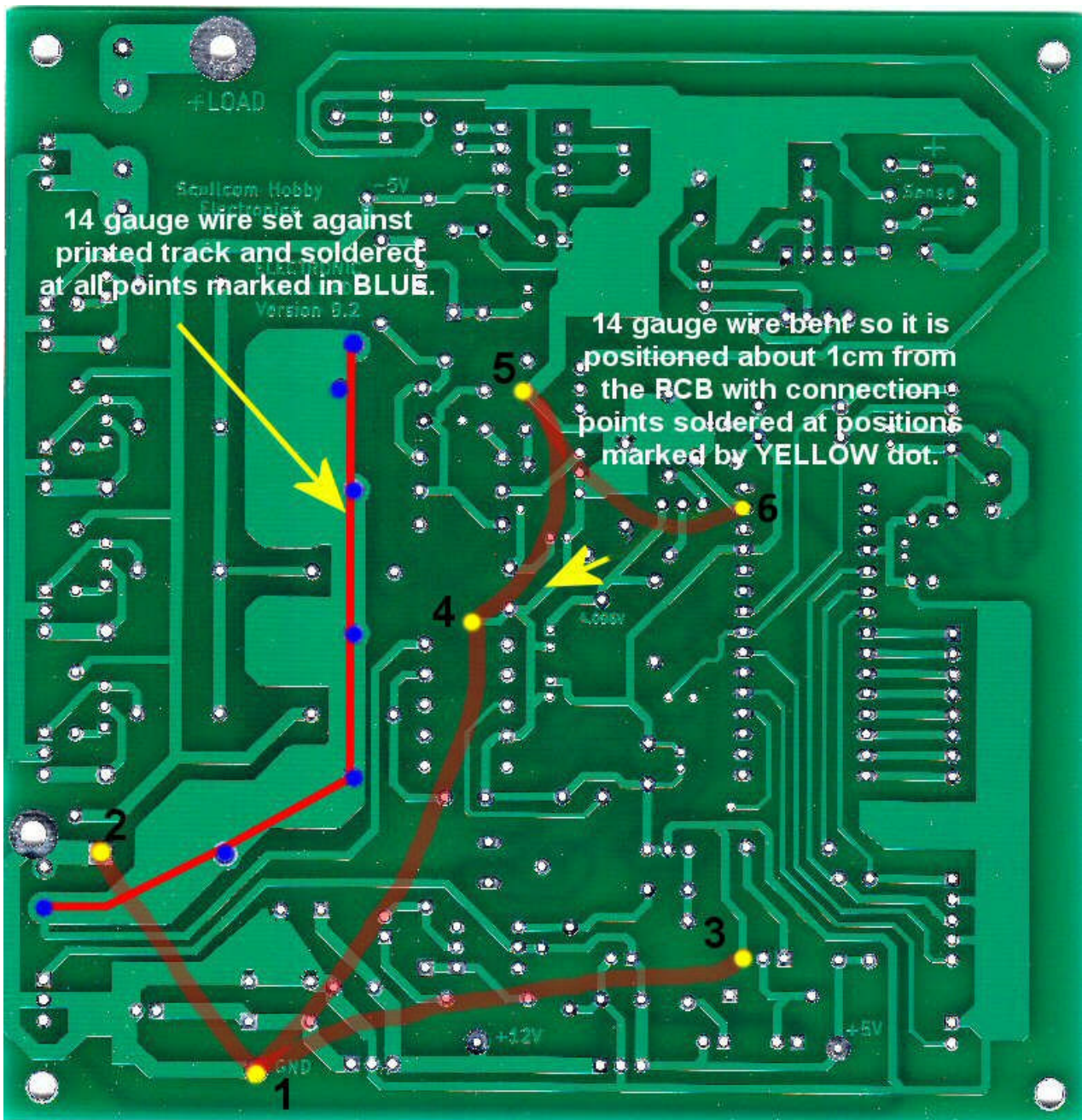


# SCULLCOM HOBBY ELECTRONICS

## Electronic DC Load (Version 9.2) Additional Copper Wire Added



Additional grounding is added to the underside of the PCB as shown above (BROWN). The solder points for this are shown as a YELLOW dot. For clarity their solder point locations are as listed below:

1. GND pin (J4 on PCB)
2. GND end of R17 (0.1ohm current sense resistor)
3. Emitter of Q1 (TIP122)
4. TP5 (GND next to U7). Feed a wire through TP5 and solder both sides on PCB and connect wire to the new copper ground wire.
5. GND side of C16
6. Pin 29 of Arduino Nano (GND)

An additional heavy gauge copper wire (shown in RED) is soldered against the PCB print connecting R22, R23, R24, R25, D3 (anode) and R17. The solder points are shown in BLUE